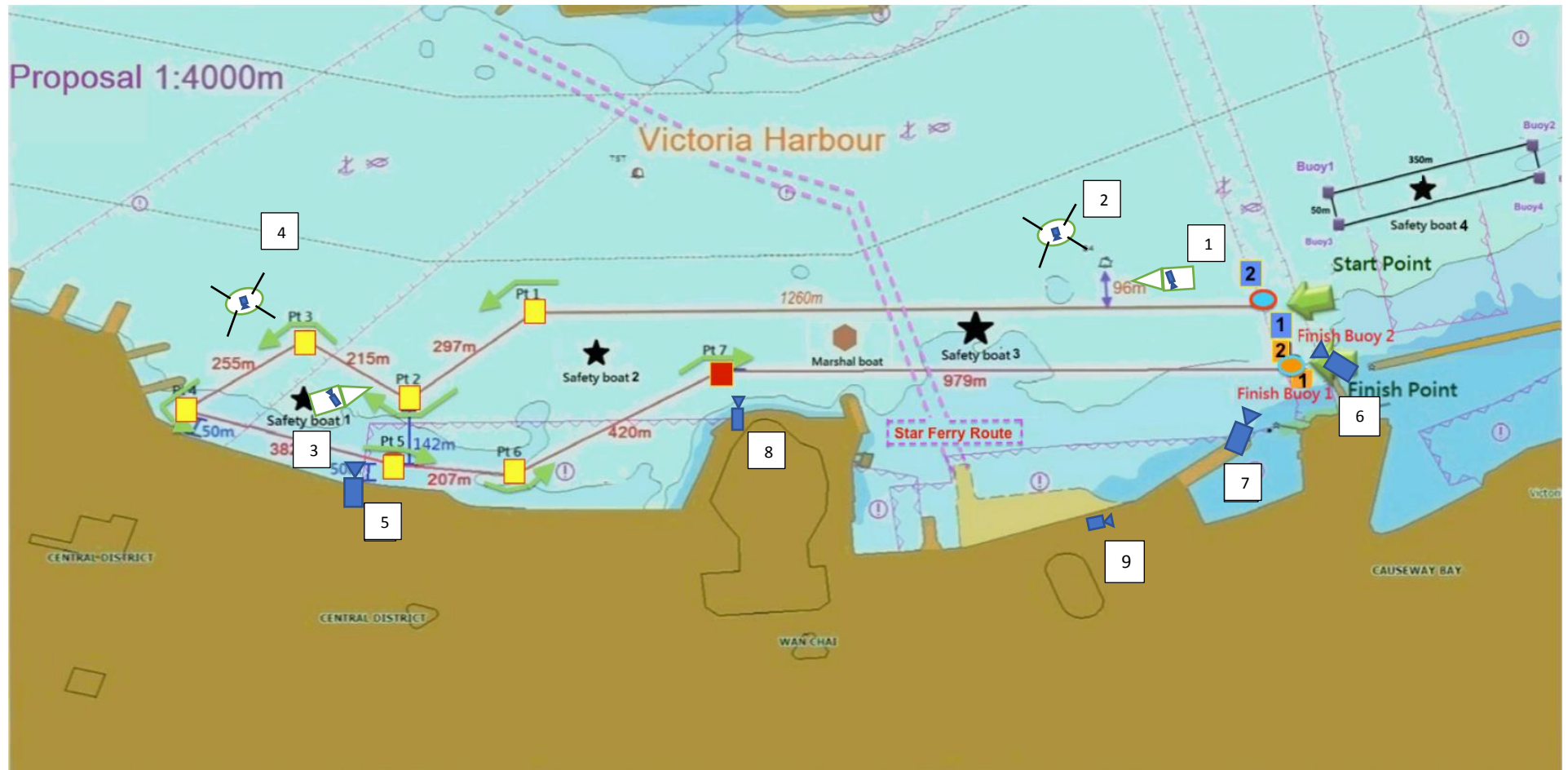


Basic Proposal Camera Setup for Coverage Coastal WCH Hongkong 2019





Camera Setup Proposal

| Cam# | Position at Venue/Course | Technical Details, Signal Flow | Coverage use |
|------|--|---|--|
| 1 | Boat gyro camera A moving mainly along the long straight from start and back to finish | Cineflex Gyro system operated with 20-30x zoom; RF transmitted | This gyro camera will be the master side tracking shot on the crews departing from start on the first 1300 m into the race and returning into Finish |
| 2 | Live Drone A for Aerial Overviews especial on the first and last 1200 m of the race | DJI Inspire 2 Standard with Zoom lens. Operated from moving boat or position on land. RF transmitted. | This done will deliver stunning aerial overviews on the crews competing especially in the first and last 1200 m of the race. It will also produce stunning beauty images on the HK venue skyline, etc. |
| 3 | Boat gyro camera B moving inside the 4 turning points close to Aqualuna Central Pier section | Cineflex Gyro system operated with 20-30x zoom; RF transmitted | This camera mainly takes over as master shot tracking with the crews when the action rise at the 4 core turning points |
| 4 | Optional: Live Drone B for Aerial Overviews and closer top-shots on crews fighting for best positions on the 4 turning points. This could also be done using only Drone B. | DJI Inspire 2 Standard with Zoom lens. Operated from moving boat or position on land. RF transmitted. | This done will deliver stunning aerial overviews on the crews competing especially in the first and last 1200 m of the race. It will also produce stunning beauty images on the HK venue skyline, etc. |
| 5 | On land position focusing on all 4 main turning points | Box lens OB SSL Camera on tripod with 70-86 x zoom. Operated. Fiber optical cabling or RF transmission (Depending on OB Van position) | This camera adds to camera 3 (boat gyro) with close up action on crews fighting at the 4 turning points |
| 6 | Post Finish-line position on land (t.b.d.) | Box lens OB Camera on tripod with 70-86 x zoom. Operated from high scaffolding or scissors lift. (t.b.d.). Fiber optical cabling | This camera delivers close ups on crews before start and after the finish-line |
| 7 | If possible: From on land side to Start and Finish Line on high scaffolding or scissors lift (t.b.d.). Option could be to have this camera mounted to a floating "start-bridge" construction | Box lens OB Camera on tripod with 30-50 x zoom. Operated. Fiber optical cabling | This angle adds to the pre-race start introduction of crews and follows the crews on the way into Finish from an "on land" perspective. |
| 8 | On land "beauty shot" position | Remote PTZ camera on tripod or fix mount with 10-20x zoom. Fiber optical cabling. Remote controlled out of the OB Van. | This position delivers stunning Victoria Harbour overviews from on land to be used as intercuts during racing and as background for live graphic integration |
| 9 | On land at award ceremony position | Handheld or tripod OB camera with wide-lens. Fiber optical cabling or RF transmitted. | This camera adds emotions from the medal awards and spectators at the venue. |

world rowing productions, c/o Steffen Rapp, executive producer/consultant
 quattro media GmbH, Ursprung 4 | 85625 Glonn | Germany
 email: steffen.rapp@4msports.com | phone office: +49 8093 572 39 | mobile: +49 151 585 43 602



Coverage Concept per race:

We start the race coverage with a 3D animation playback of the course followed by live-graphic start list (beauty shot background from camera) . Cameras 6 and 7 (side to start line and post finish) deliver close up of crews lining up for their introduction with graphics pre-race-start. Once the race is on the first gyro camera boat tracks on the side with field on their long way to the first turning buoy. At this first long stage the live-drone delivers aerial overviews of the field from side, top, front and chase that can be intercut with close-ups from the 2 cameras on land in the start-section. Once the race has reached the multiple turning points section gyro boat camera 2 takes over more or less on the master tracking close with crews from in field perspective, while camera 5 delivers stunning close ups and slow-motion replay options from a close-by on land position. A second drone (if budget available) delivers rather close top-shot overviews of the fighting when all crews try to pass the turning points in best options. All of the ongoing race action is enhanced graphically with race-timing, and standings based up on interval positioning, speed and stroke-rates of the individual crews that can be measured.

Once the racing field has passed the turning points section returning to Finish on the long straight section, gyro camera boat 1 takes over the side tracking master signal again, while the live-drone follows the field with aerial overviews from the side, back and front of the field. Once the crews come into the final 200m before the FL, camera 7 helps bringing them over the line from a side perspective with the ability to zoom in close, while camera 6 (behind start/finish) picks up on first emotions post finish. Once all crews have passed finish, our replay of action from various angles focusses on best action and emotions, before the result-graphic is finally shown.

With an additional handheld camera on land, we are able to integrate the flower and medal awards live with the coverage. For Live-streaming and broadcast purpose we supply live commentary position(s) directly at the venue.

Creative Crew Structure Proposal:

| Position | Function | Source |
|--------------------------------------|--|--|
| Executive TV Producer | Lead on Project; Creative Lead during Live production | WRP, Europe |
| Live TV Director | Switching of all live signals. Creative lead on coverage | WRP, Europe |
| Production Manager | Coordinating all production related execution onsite. | WRP, Europe |
| EVS Replay Operators 1+2 | Live Slow-Motion Replay and Highlight operation | Locally, if experienced and English Speaking |
| Camera Operators Live 1-4 | Live camera operation from various on land positions | Locally, if experienced and English Speaking |
| Live Gyro Camera Operators 1+2 | Live gyro camera operation from the boats | Locally, if experienced and English Speaking |
| Live Drone Camera Operators + Pilots | Live Drone and camera operation from boat/on land | Locally, if experienced and English Speaking /Project with DJI |
| Live Graphics Operator | Live Graphic Inserts during coverage | Externally (Swiss Timing) |

world rowing productions, c/o **Steffen Rapp**, executive producer/consultant
quattro media GmbH, Ursprung 4 | 85625 Glonn | Germany
email: steffen.rapp@4msports.com | phone office: +49 8093 572 39 | mobile: +49 151 585 43 602



Summary:

With all of this professional coverage approach our aim is to deliver broadcast quality level host-production, while minimizing related crew and production equipment. Therefore we want to source as many crew as possible and all production equipment locally to save budgets and restrict WRP crew onsite from Europe to 3 positions only (if experienced and English-speaking resources are available).

With our production concept we are aiming to feed several different output possibilities parallel: local broadcaster TV, online platforms, social media platforms, onsite video-screen distribution for spectators. This variety an parallel platform output potential could be used as a real value to integrate local sponsor to serve their media commercial engagements. Potential bannerings possibilities can be brought together with camera setup planning and angles.